

**Anti-Histamine H2 Receptor Antibody**  
**Rabbit polyclonal antibody to Histamine H2 Receptor**  
**Catalog # AP59581****Specification**

---

**Anti-Histamine H2 Receptor Antibody - Product Information**

Application	WB, IF/IC
Primary Accession	<a href="#">P25021</a>
Other Accession	<a href="#">P97292</a>
Reactivity	Human, Mouse, Rat
Host	Rabbit
Clonality	Polyclonal
Calculated MW	40098

**Anti-Histamine H2 Receptor Antibody - Additional Information****Gene ID** 3274**Other Names**

Histamine H2 receptor; H2R; HH2R; Gastric receptor I

**Target/Specificity**

Recognizes endogenous levels of Histamine H2 Receptor protein.

**Dilution**

WB~~WB (1/500 - 1/1000), IF/IC (1/100 - 1/500)

IF/IC~~N/A

**Format**

Liquid in 0.42% Potassium phosphate, 0.87% Sodium chloride, pH 7.3, 30% glycerol, and 0.09% (W/V) sodium azide.

**Storage**

Store at -20 °C. Stable for 12 months from date of receipt

**Anti-Histamine H2 Receptor Antibody - Protein Information****Name** HRH2**Function**

The H2 subclass of histamine receptors mediates gastric acid secretion. Also appears to regulate gastrointestinal motility and intestinal secretion. Possible role in regulating cell growth and differentiation. The activity of this receptor is mediated by G proteins which activate adenylyl cyclase and, through a separate G protein-dependent mechanism, the phosphoinositide/protein kinase (PKC) signaling pathway (By similarity).

**Cellular Location**

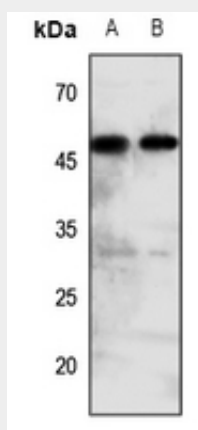
Cell membrane; Multi-pass membrane protein.

## Anti-Histamine H2 Receptor Antibody - Protocols

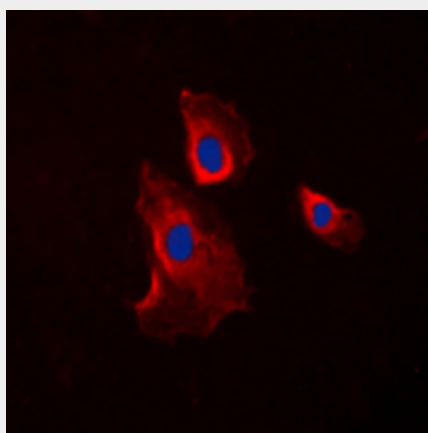
Provided below are standard protocols that you may find useful for product applications.

- [Western Blot](#)
- [Blocking Peptides](#)
- [Dot Blot](#)
- [Immunohistochemistry](#)
- [Immunofluorescence](#)
- [Immunoprecipitation](#)
- [Flow Cytometry](#)
- [Cell Culture](#)

## Anti-Histamine H2 Receptor Antibody - Images



Western blot analysis of Histamine H2 Receptor expression in mouse kidney (A), rat liver (B) whole cell lysates.



Immunofluorescent analysis of Histamine H2 Receptor staining in COLO205 cells. Formalin-fixed cells were permeabilized with 0.1% Triton X-100 in TBS for 5-10 minutes and blocked with 3% BSA-PBS for 30 minutes at room temperature. Cells were probed with the primary antibody in 3% BSA-PBS and incubated overnight at 4 °C in a humidified chamber. Cells were washed with PBST and incubated with a DyLight 594-conjugated secondary antibody (red) in PBS at room temperature in the dark. DAPI was used to stain the cell nuclei (blue).

## Anti-Histamine H2 Receptor Antibody - Background

KLH-conjugated synthetic peptide encompassing a sequence within the center region of human Histamine H2 Receptor. The exact sequence is proprietary.